

# CLUE

Breana Porter

Dr. Sherry



# Problem: College drinking

- Although songs like I Love College and movies like American Pie and Project X make students feel “in the moment”. What is the real driving force to drinking during your college experience?



# Background statistics

- 1,825 college students between the ages of 18 and 24 die each year from alcohol-related unintentional injuries.
- More than 690,000 students between the ages of 18 and 24 are assaulted by another student who has been drinking.
- More than 97,000 students between the ages of 18 and 24 are victims of alcohol-related sexual assault or date rape.
- 599,000 students between the ages of 18 and 24 receive unintentional injuries while under the influence of alcohol.
- About 25 percent of college students report academic consequences of their drinking including missing class, falling behind, doing poorly on exams or papers, and receiving lower grades overall.
- More than 150,000 students develop an alcohol-related health problem and between 1.2 and 1.5 percent of students indicate that they tried to commit suicide within the past year due to drinking or drug use.

# Background pt.2

- According to the 2011 monitoring and future study survey 36% of college students admitted to drunk driving. After conducting another study back in 2001 an estimated 2.8 million college students drove under the influence. (1)

**A question on everyone's mind is, “*Why do people drink and drive?*”**  
(2)

-After reading information from Why Guides it was said that sometimes people feel immune to the effects of alcohol. This and every person is different with different tolerance levels. For example two cups of beer can make someone “drunk” while it takes 5 cups of beer for someone else to get drunk. (3)

(1)INtroduce

(2)INsert

(3)INterpret

# Background pt.3

- According to Recovery Connection there were 1,717 unintentional deaths from alcohol related injuries. Peer pressure can play a huge role in college decision making. It was said that the sources of pressure stem from academics, career choice, financial aid, and peer pressure. Students especially on college campuses feel the need to “fit in” or be “cool”, which evolves from one student feeling bad about saying no to another. Now-a-days there is no such thing as going to a party without there being alcohol supplied to you or everywhere around you. Which leads us to the topic of “jungle juice”.
- What is “Jungle Juice”?
- According to Indiana University As many as one in four women experience unwanted sexual intercourse while attending college in the United States. At parties people use alcohol or date rape drugs in order to undermine a person’s ability to resist sex. Which is easy for a rapist when a party is serving jungle juice. Jungle juice is made from a variety of different alcohol mixed with fruity soda’s and juice to make the ultimate drink for the party goers.

# Method:



## Student Interview 1

- Why do you choose to drink ?
- “After being stressed out from a crazy week of school I can’t wait to let loose and binge drink with other students doing the same thing. Also no crazy story started from drinking water” (freshman, 2015)

## Student interview 2 (Greek Life)

- Why do you choose to drink ? Is it a personal choice or did the peer pressure of being in greek life influence your decision?
- “I choose to drink to better my college experience. It’s a lot of fun when you’re doing it with the people you trust around you. It is also a personal choice of mine because I’ve been drinking even before college” (freshman BetaSigmaDelta, 2015)



# Method pt. 2

## Student Interview 3

- Why do you choose to drink?
- “I choose to drink because I don’t see college being as much fun without alcohol. Also to reward myself for the hard work I had put in that previous week. Drinking is so normal around here I even looked at ImShmacked YouTube videos before choosing the college I wanted to attend.” ( Sophomore, 2015)

## Student Interview 4 (Greek Life)

- Why do you choose to drink ? Is it a personal choice or did the peer pressure of being in Greek life influence your decision?
- “I drink because if the alcohol is there, why not, and more so but I’d be drinking either way” (freshman Zetes, 2015)

# Method pt. 3

## **Student interview 5**

- Why do you choose to drink ?
- “I choose to drink because it makes the experience with my friends more “wild”” (freshman, 2015)

## **Student interview 6 (Greek Life)**

- Why do you choose to drink ? Is it a personal choice or did the peer pressure of being in Greek life influence your decision?
- “I drink because my friends do and we do it together all the time. I never usually drink by myself unless my friends are with me. I think Greek life has pushed my drinking habits higher than they were before I got involved with Greek life.” (Sophomore Theta tau, 2015)



# Findings

## Student

- While interviewing a couple students who aren't involved with Greek life I found that students started drinking since they were in high school. Now all the pressure that college gives they tend to drink more to relieve the stress.

## Greek life student



- After conducting interviews with a couple members of Greek life I saw a pattern between the guys. The guys just do it just to do it. No peer pressure was involved. After interviewing females in Greek life I found that females drink because their friends asked them to. The difference between the guys and girls is that guys binge drink more than females do.

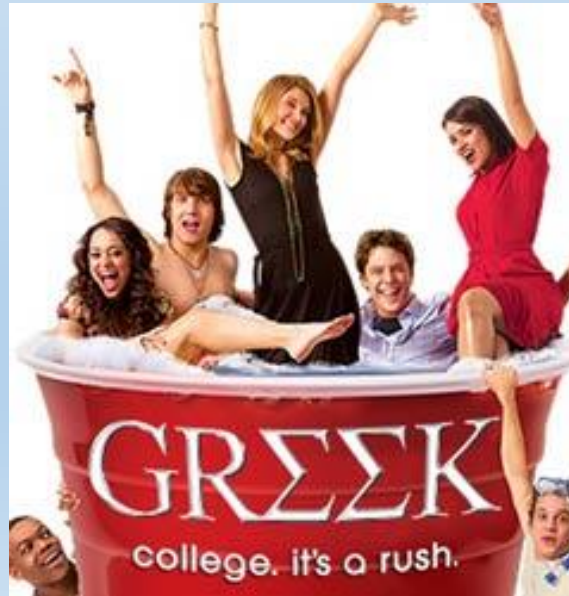
## Findings pt. 2

In my findings I realized that students are very stressed out now a days.(1) They choose to drink not only for the relief of forgetting all the responsibilities on their plates but it also has a lot to with peer pressure.(2)

After conducting another interview with a greek alumni. She went on to explain to me that back when she was in college, drinking was definitely part of everyday life but her greek organization was more involved in the charitable aspect and not just having a bigger social life and how drunk she can get on the weekends and sometimes weekdays(3)



**VS.**

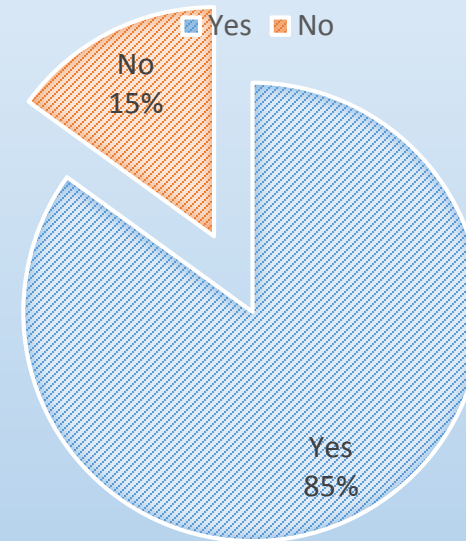


- (1)INtroduce
- (2)INsert
- (3)INterpret

# Findings pt. 3

- While walking around campus I decided to take a poll of 20 random Bloomsburg University students....

DO YOU DRINK



- I realized that the 3 students who admitted to drinking were students who seemed more studious compared to the athletes, Greek members and others.

# Conclusion:

- After conducting my research I realized that more people who are involved with greek life or some day plan to be involved with greek life drink more than students who aren't involved. I also figured out that female students drink more when their friends are dinking with them. Females tend to do things in pairs or in groups, compared to guys who don't have a problem drinking on their own. A research done by abc news at Colgate University showed that it helps students maintain happiness. A study they did showed that students who binge drink reported to be "happier" that students that didn't drink.